

[Feeder Breaker. HFB]

**HAZEMAG**

**Experience.  
Innovation.  
Results.**

---

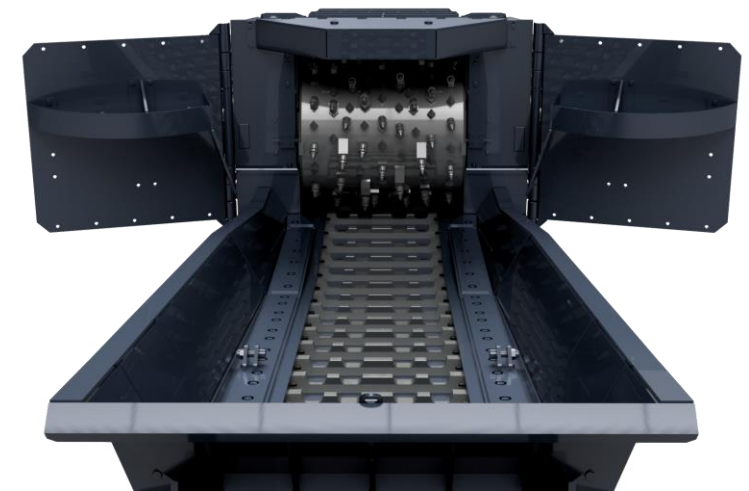
**Crushing | Screening | Feeding**

# Feeder Breaker

---

**The HAZEMAG Feeder Breaker is a crushing plant, which works according to a field-proven principle of crushing in the horizontal material flow**

- No deflection or plug up of feed material
- High capacity
- PLC controlled feeder and crusher
- Compact design
- High mobility
- In-pit crushing
- Little space needed for installation
- No horizontal adjustment
- At-grade feeding



# Operation Method

---

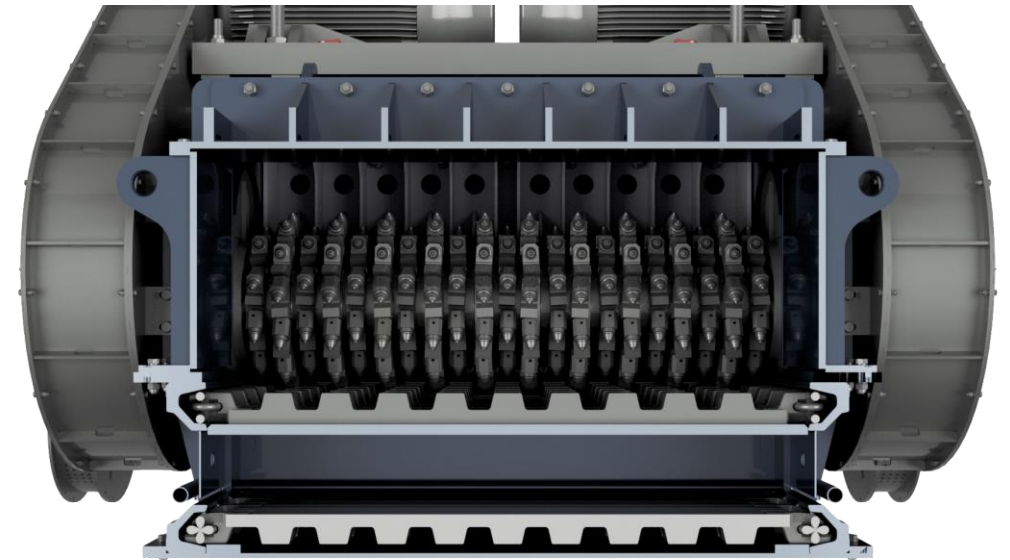
- Chain Feeder transports material into the crushing chamber
- Rotating crushing roll is equipped with crushing tools
- Material is crushed by impact force on the Chain Feeder
- Product size is decisively determined by design and arrangement of the crushing tools and scrapers within the conveyor
- Adjustable crushing roll and conveying speed
- Granulation size may be adjusted to customer requirements variably on the fly



# Application

---

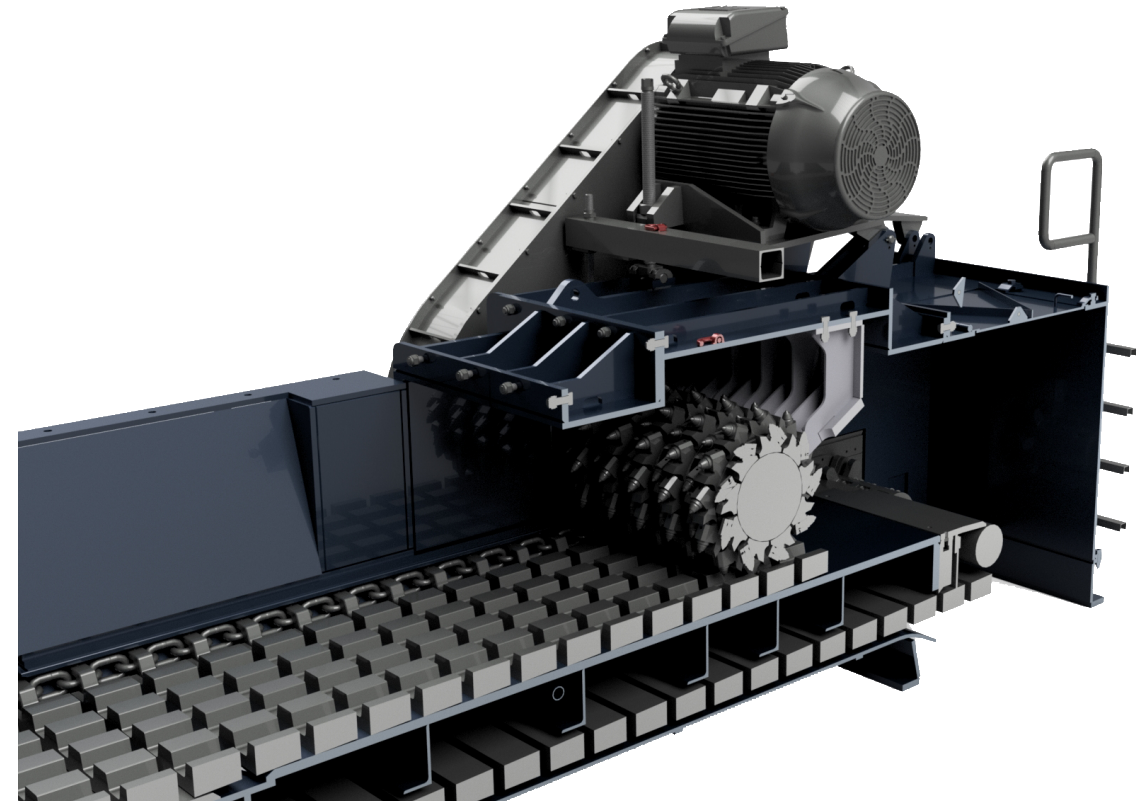
- Low material feed height and various options permit the application in many fields above as well as underground
- Various tasks in the mining and bulk goods industry, as well as on storage and reloading points
- feed material needs to be brittle, reasonably dry, mainly not sticky and can be ductile to some degree
- Usually for comminution of:
  - Potash and rock salt
  - Gypsum and chalk
  - Coal
  - Slags
  - Petrol coke



# Equipment

---

- Housing
  - Heavy-duty construction with the aim to handle the load of the crushing roll and to avoid spraying fragments
- Crushing Roll
  - Drum equipped with round shaft picks with the aim to shear the material in front of the crusher roll
- Drive System
  - Single or double drives are used on crushing roll and chain feeder
  - Power transmission may be realized via planetary bevel gears or V-belt drive

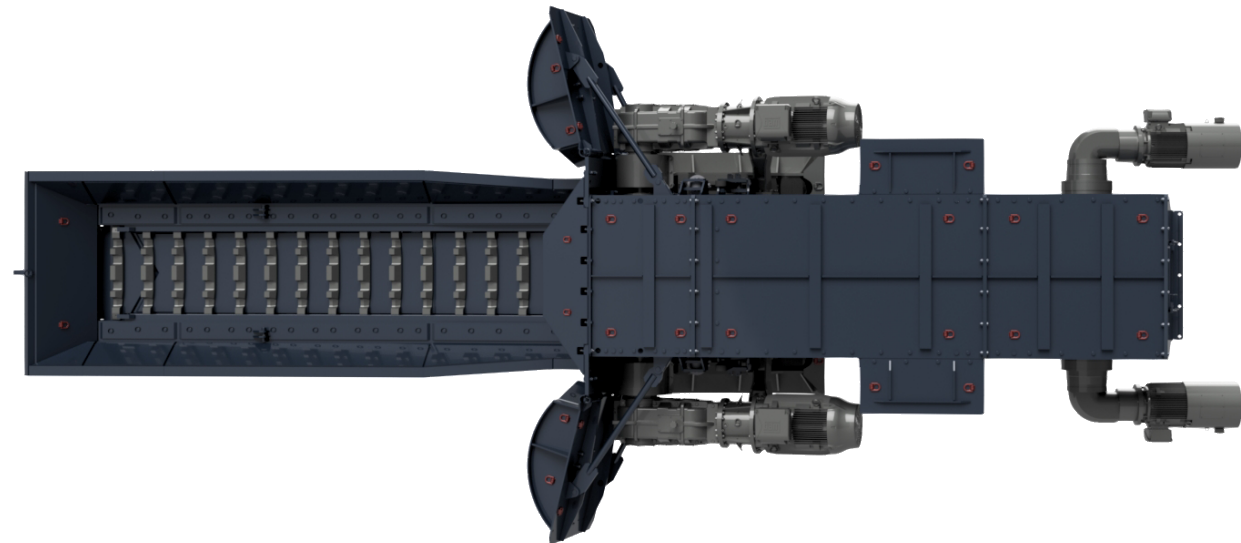




# Equipment

---

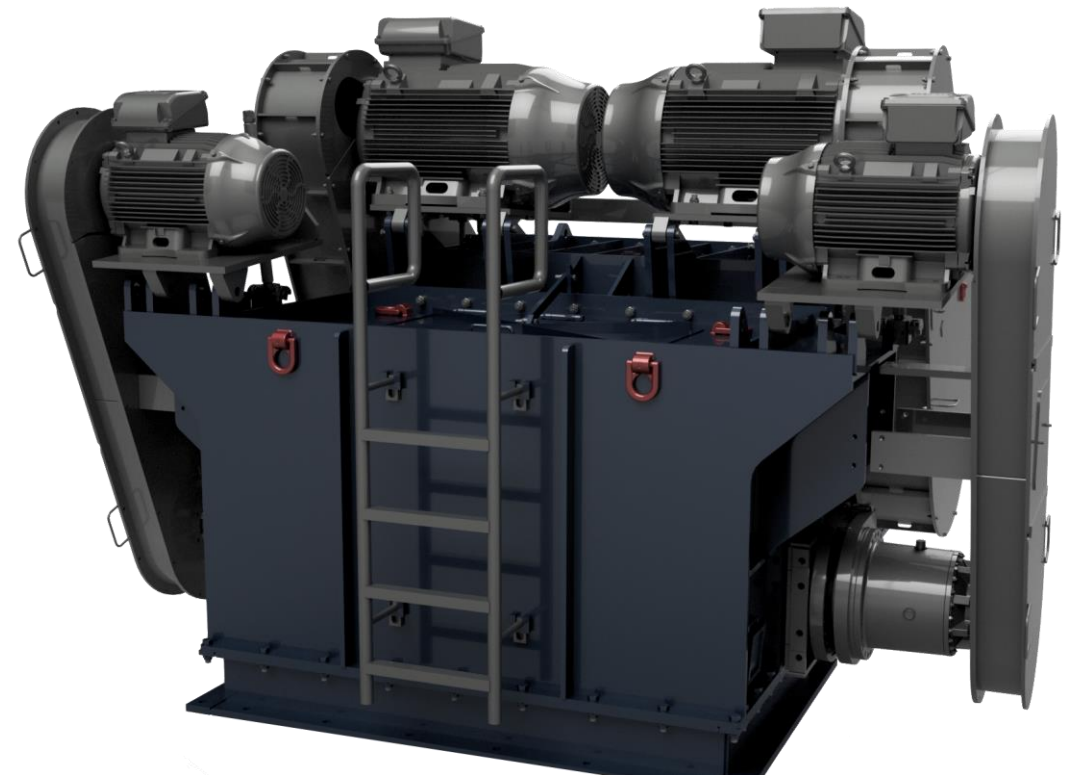
- Chain Feeder
  - Extremely robust designed chain feeders, which are reinforced beyond the crushing zone
  - Numerous profile elements, which are joined together by pins and screws
  - Lengths of the conveyor in front and behind of the crushing roll are incrementally customizable
  - Device to tighten the chain is integrated within return unit
  - Chain reversing shaft moved by a manually driven spindle or hydraulic cylinders



# Equipment

---

- Equipment alternatives:
  - Feed hopper
  - Integrated roller screen in chain conveyor
  - Variable length of chain conveyor
- Mobility options:
  - Floor mounted
  - Roof hanged
  - On skids: Rigid or adjustable
  - Crawler tracked
  - Self-propelled on crawler tracks





[hazemag.com](https://hazemag.com)

Copyright ©2022 HAZEMAG Systems. All rights reserved.  
This document makes no offers, representations or warranties (express or implied),  
and information and data contained in this document are for general reference only  
and may change at any time.

